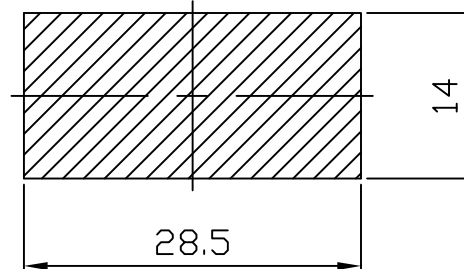
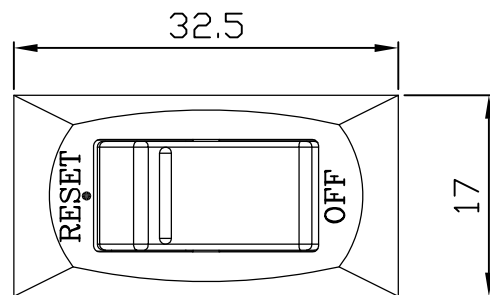
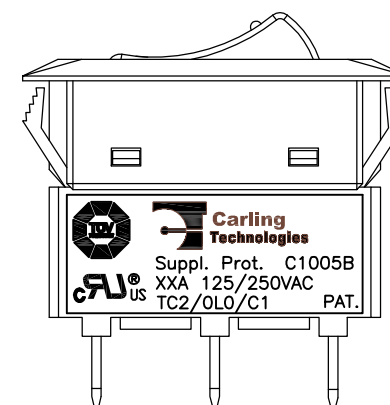
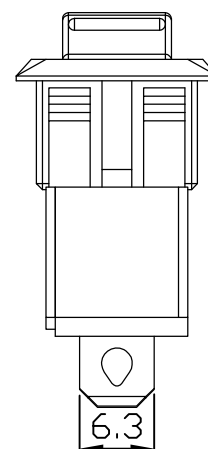
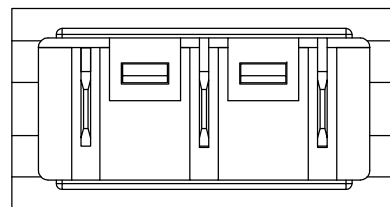
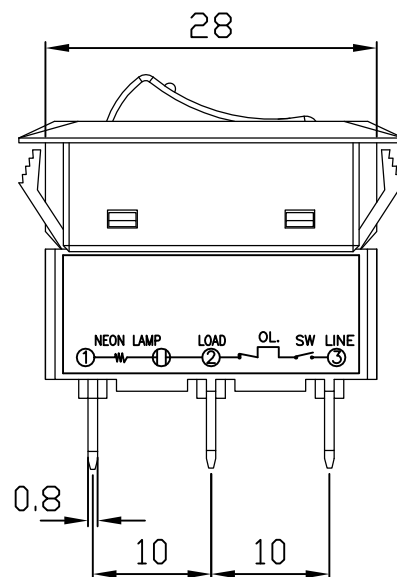
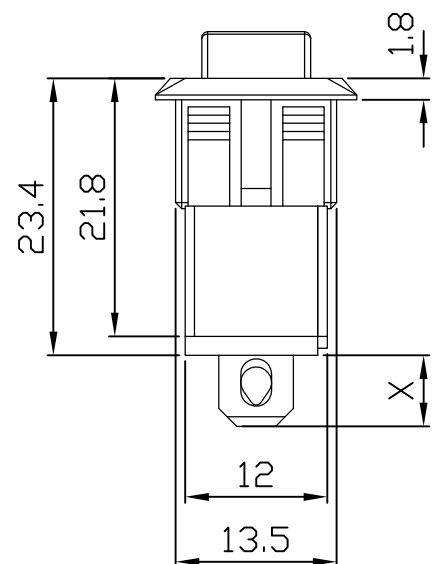


C1005B



PANEL CUT OUT



Part No.	Terminal	Print color	Rating(XX)	Contact	cover color	snap color	Lamp
	X						
C1005B-3AXX3BR3	6.0	white	7A~16A 125/250VAC	0.3mm	Black	Red	exist
C1005B-3AXX3BG3	6.0	white	7A~16A 125/250VAC	0.3mm	Black	green	exist
C1005B-3AXX3WR3	6.0	black	7A~16A 125/250VAC	0.3mm	White	Red	exist
C1005B-3AXX5BR3	6.0	white	7A~16A 125/250VAC	0.5mm	Black	Red	exist
C1005B-3AXX5BG3	6.0	white	7A~16A 125/250VAC	0.5mm	Black	green	exist
C1005B-3AXX3WT3	6.0	black	7A~16A 125/250VAC	0.3mm	White	Transparent	exist
C1005B-3BXX1BR3	10.0	White	7A~16A 125/250VAC	0.3mm	Black	Red	exist

5	→			GENERAL TOLERANCE		approved	checked	designed	drawn	ALL SIZE ARE IN	MM	
4	→			GRADATION	TOLERANCE					SCALE	1.5:1	
3	→			X	±0.4				Hvey	MAT'L	**	DRAWING NO.
2	→			X.X	±0.3					MATERIAL NO.		
1	→			X.XX	±0.1					C1005B-3		
NO.	DESCRIPTION	APPROVED	DATE	ANGLE	±1°	Carling Technologies Inc.						971-0070